

The Everything Music Theory Book:

Etude Answers!

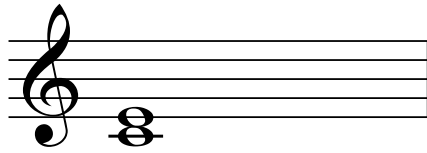
Due to a regretful glitch in the publishing process, the answers to the etudes were never published. I am deeply sorry about this, and have made these available for you now in PDF form.

If you have any questions, please contact me at:
info@marcschonbrun.com

Thanks so much for your patience!

Marc Schonbrun

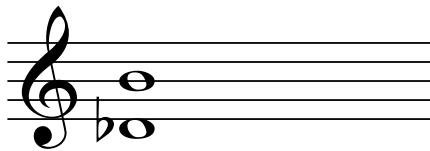
Name The Following Intervals



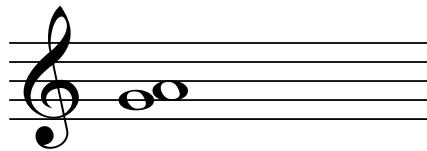
Major Third



Minor Sixth



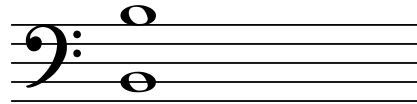
Augmented Sixth



Major Second



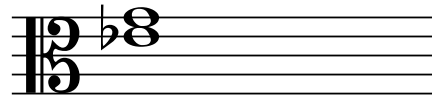
Perfect Fifth



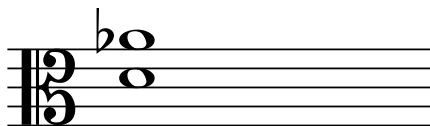
Perfect Octave



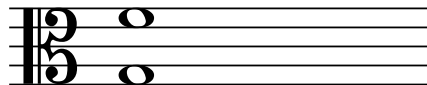
Minor Second



Major Third



TriTone

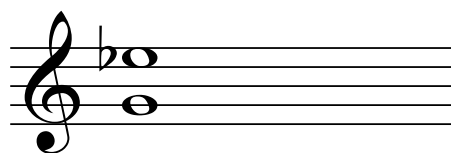


Minor Seventh

Write The Following Intervals
(Ascending)



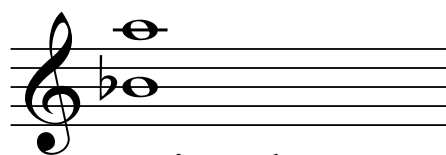
Major 3rd



Minor 6th



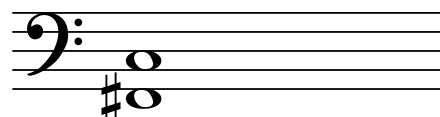
Perfect 4th



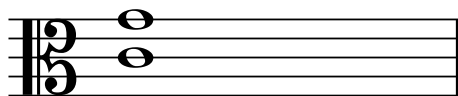
Major 7th



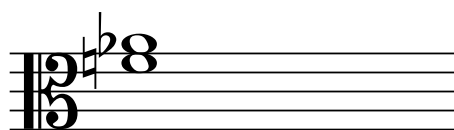
Minor 2nd



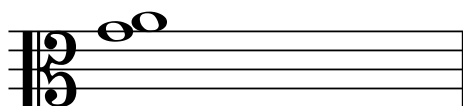
Diminished 5th



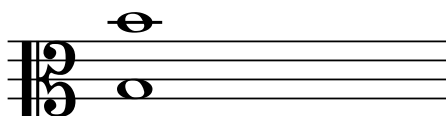
Perfect 5th



Minor 3rd

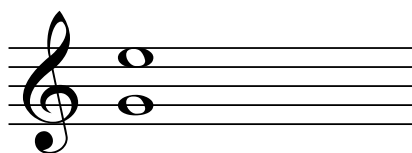


Major 2nd

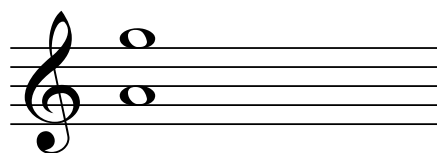


Octave

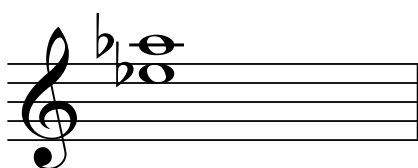
Write The Following Intervals
(Descending)



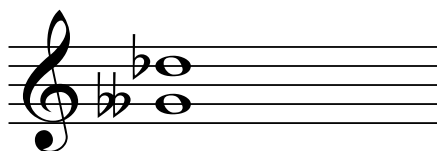
Major 6th



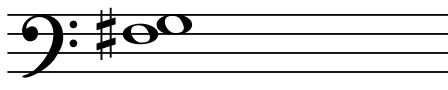
Minor 7th



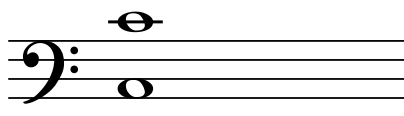
Perfect 4th



Augmented 5th



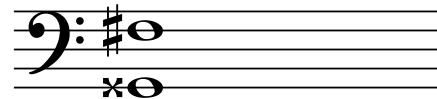
Minor 2nd



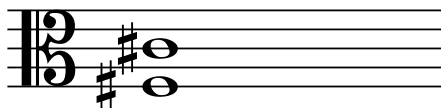
Octave



Unison



Diminished 7th

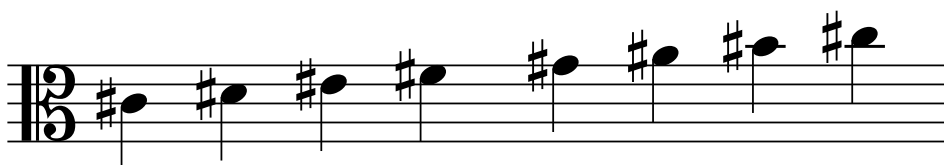
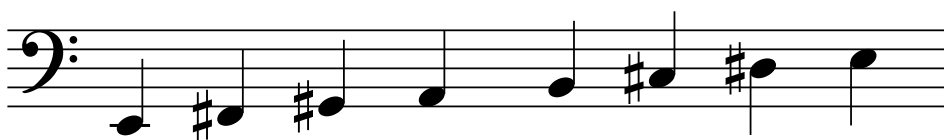
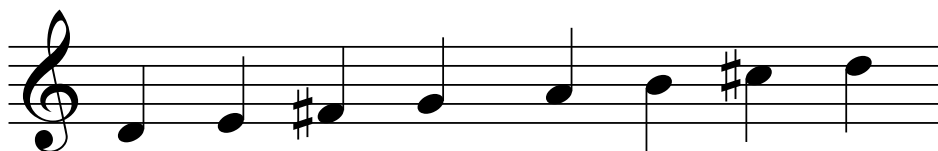


Perfect 5th

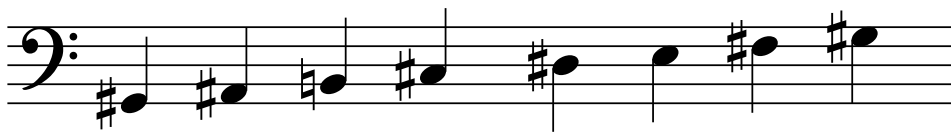
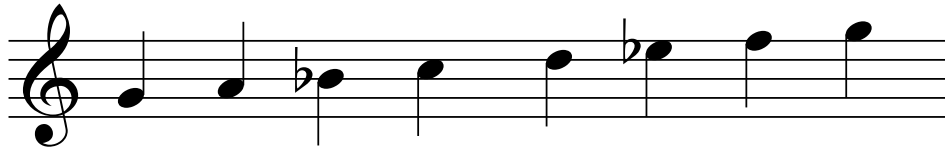


Minor 3rd

Write Major Scales From The Following Notes



Write Minor Scales From The Following Notes



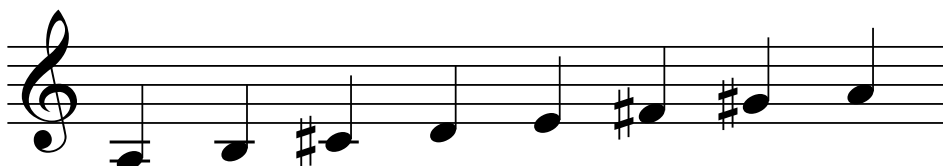
Name The Following Scales
(Major or Minor)



E \flat Major



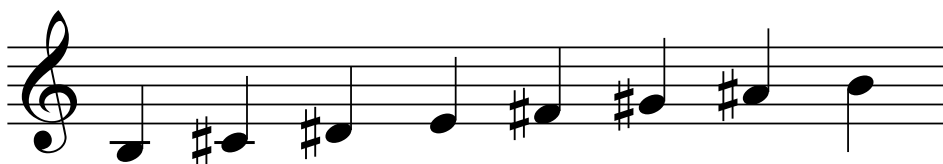
G Minor



A Major



E Minor



B Major

Name The Following Scales
(Major or Minor)



A Minor



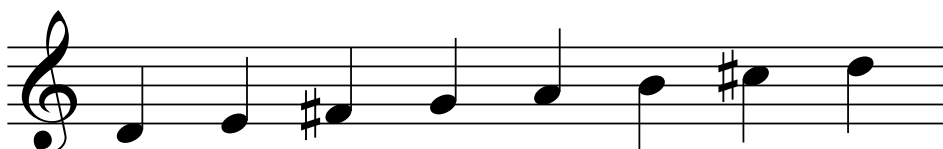
C# Minor



F Major



D Minor

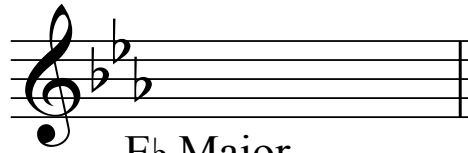


D Major

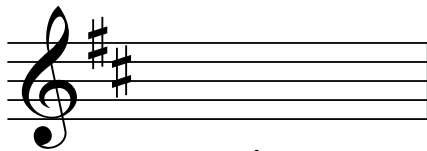
Name The Following Key Signatures
(Major and Relative Minor)



A Major
F# Minor



Eb Major
C Minor



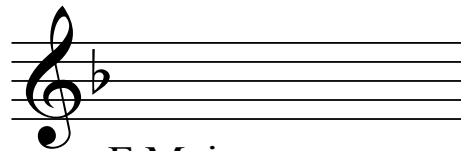
D Major
B Minor



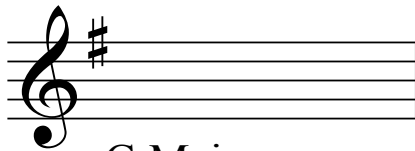
B Major
G# Minor



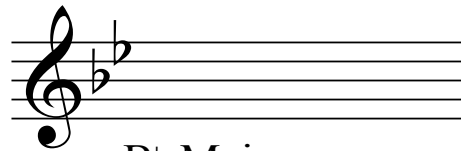
Gb Major
Eb Minor



F Major
D Minor



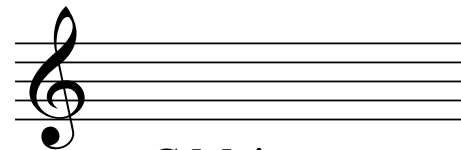
G Major
E Minor



Bb Major
G Minor



E Major
C# Minor



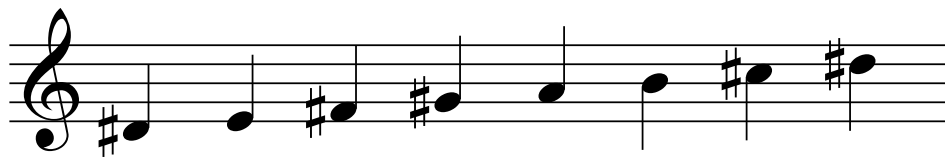
C Major
A Minor

Write Modal Scales From The Following Notes




Aeolian

A musical staff in treble clef showing a scale of eight notes: G4 (sharp), A4, B4 (natural), C5 (sharp), D5 (sharp), E5 (natural), F5 (sharp), and G5 (sharp). The notes are written as quarter notes.




Locrian

A musical staff in treble clef showing a scale of eight notes: G4 (sharp), A4, B4 (sharp), C5 (sharp), D5, E5, F5 (sharp), and G5 (sharp). The notes are written as quarter notes.



Mixolydian

A musical staff in bass clef showing a scale of eight notes: G3, A3, B3 (sharp), C4, D4, E4, F4 (natural), and G4. The notes are written as quarter notes.



Dorian

A musical staff in bass clef showing a scale of eight notes: G3, A3, B3 (flat), C4, D4, E4 (natural), F4 (flat), and G4. The notes are written as quarter notes.



Lydian

A musical staff in alto clef (C-clef on the third line) showing a scale of eight notes: C4, D4, E4, F4 (natural), G4, A4, B4, and C5. The notes are written as quarter notes.

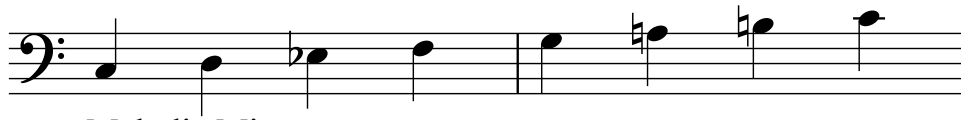
Write "Special" Scales From The Following Notes



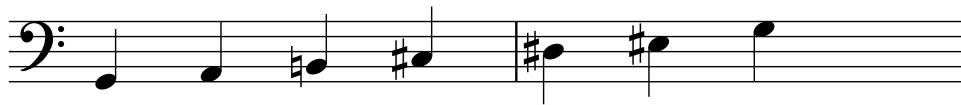
Harmonic Minor



Natural Minor



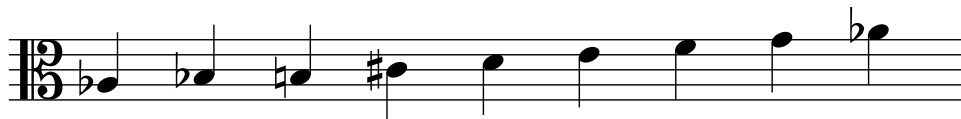
Melodic Minor



Whole Tone

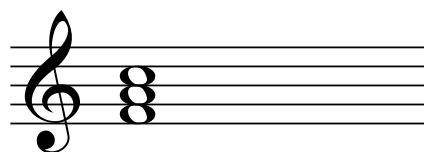
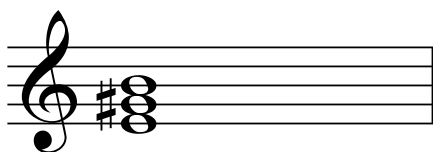
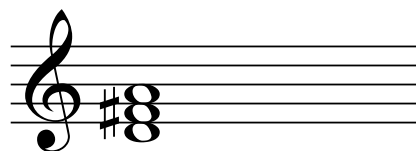
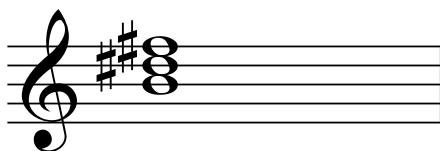
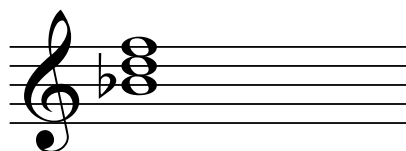
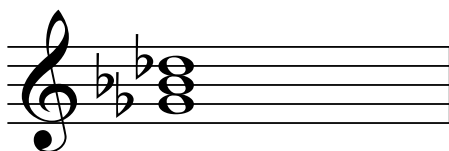
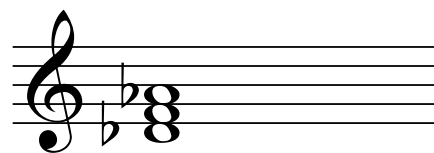
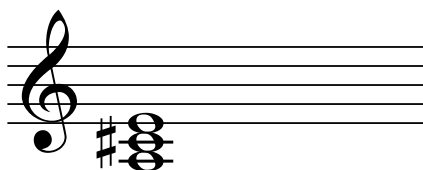
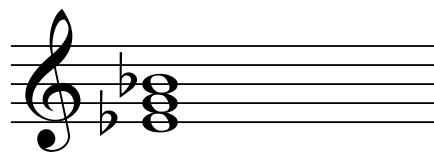
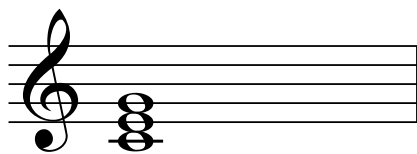


Diminished (Half Whole)

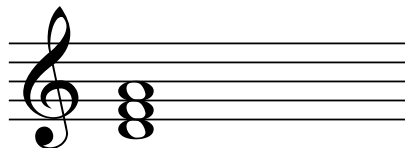
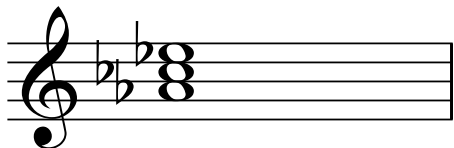
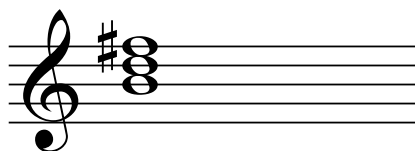
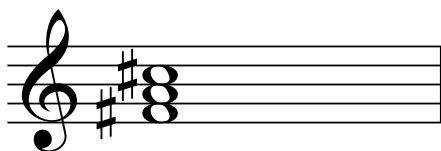
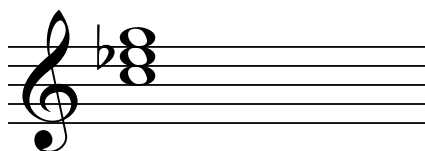
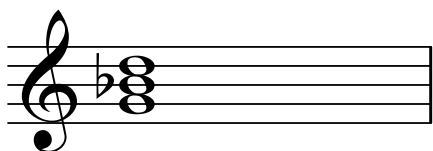
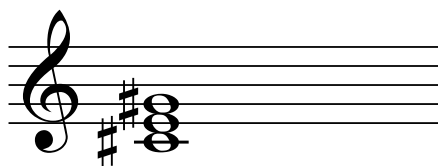
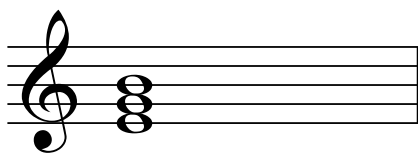
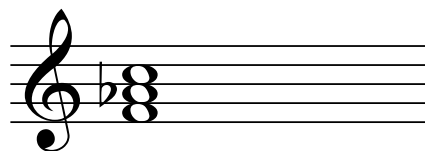
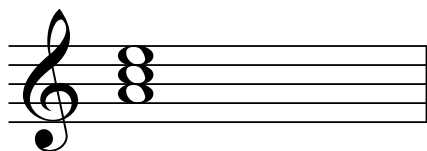


Diminished (Whole Half)

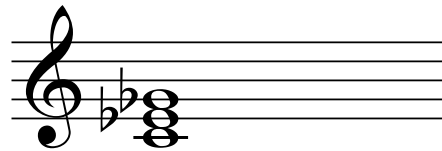
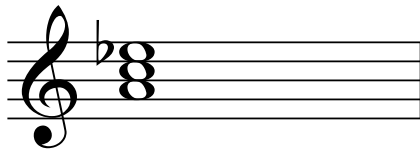
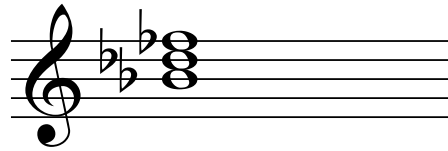
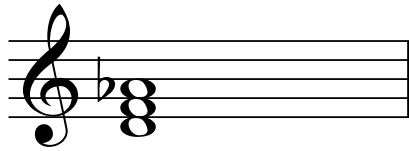
Spell the Following Major Triads



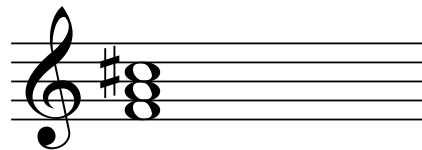
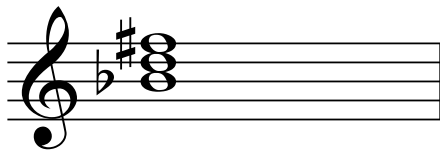
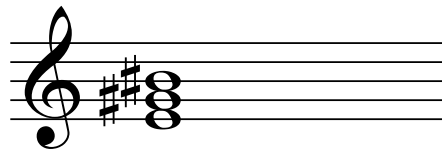
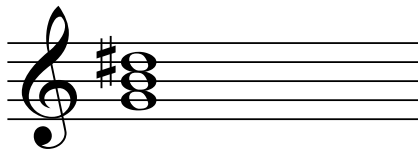
Spell the Following Minor Triads



Spell the Following Diminished Triads



Spell the Following Augmented Triads



Spell Major Scales, Add Key Signatures,
Add Diatonic Triads and Name The Triads

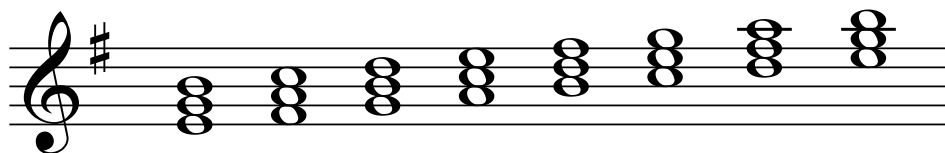
G Am Bm C D Em F#° G

A Bm C#m D E F#m G#° A

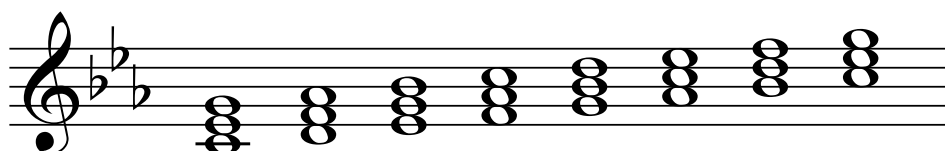
F Gm Am B^b C Dm E[°] F

D^b E^bm Fm G^b A^b B^bm C[°] D^b

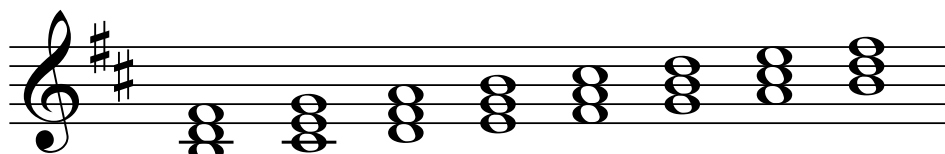
Spell Minor Scales, Add Key Signatures,
Add Diatonic Triads and Name The Triads



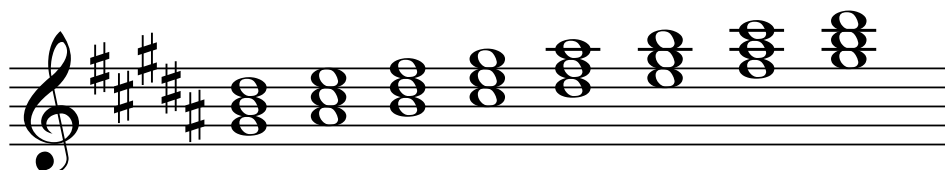
Em F#° G Am Bm C D Em



Cm D° Eb Fm Gm Ab Bb Cm

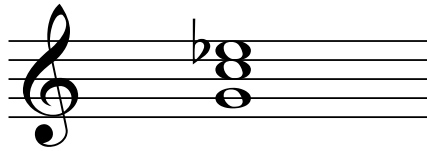


Bm C#° D Em F#m G A Bm

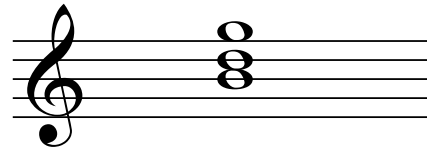


G#m A#° B C#m D#m E F# G#m

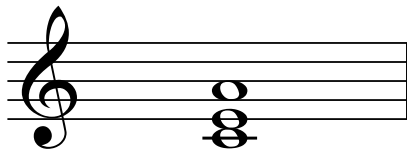
Write The Following Inverted Triads



Cm/G
i₆₄



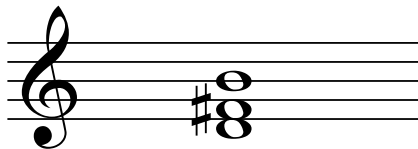
G/B
I₆



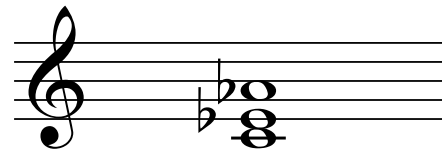
Am/C
i₆



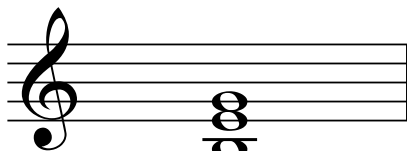
G#/D#
I₆₄



Bm/D
i₆



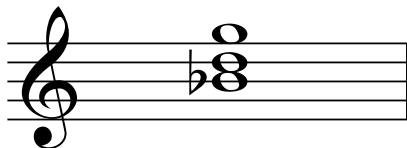
Ab/C
I₆



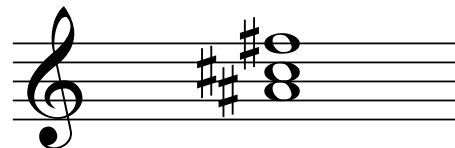
Em/B
i₆₄



C#/G#
I₆₄

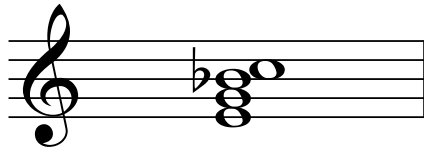


Gm/Bb
i₆

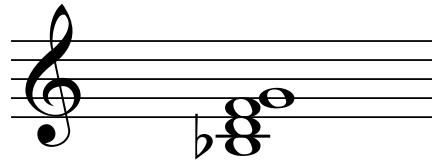


F#/A#
I₆

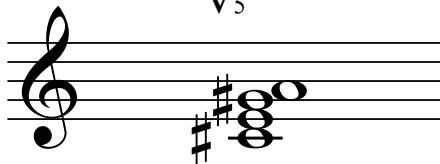
Write The Following Inverted Seventh Chords



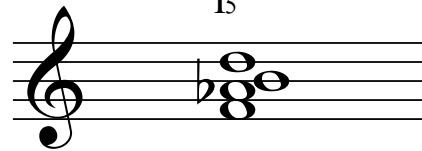
C7/E
V₅⁶



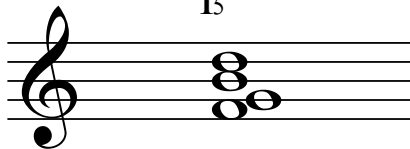
Gm7/B_b
i₅⁶



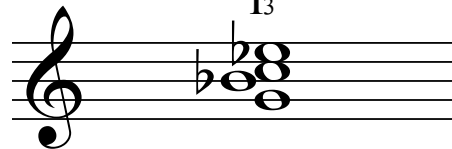
AMaj7/C#
I₅⁶



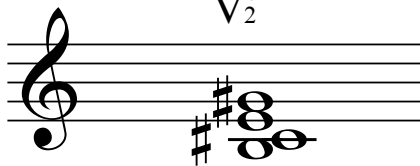
Bdim7/F
I₃⁴



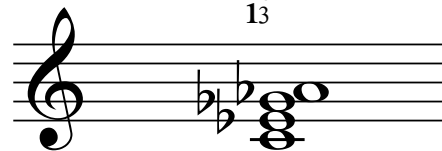
G7/F
V₂⁴



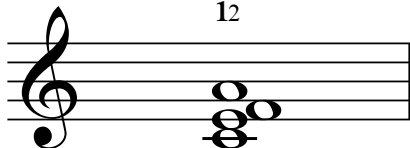
Cm7/G
i₃⁴



C#min7/B
i₂⁴



A_b7/C
V₃⁶

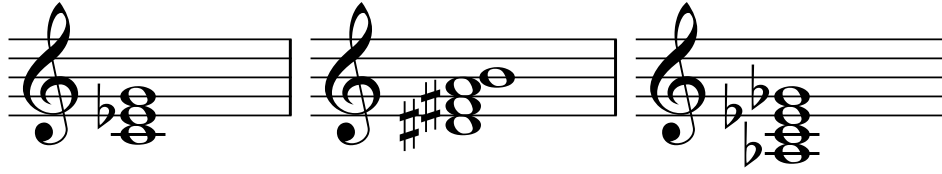


FMaj7/C
I₃⁴



B_bmin7/D_b
i₅⁶

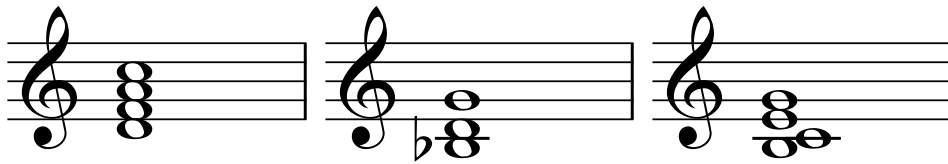
Name The Following Triads, 7th Chords and Inversions



Cm

B⁷/D[#]

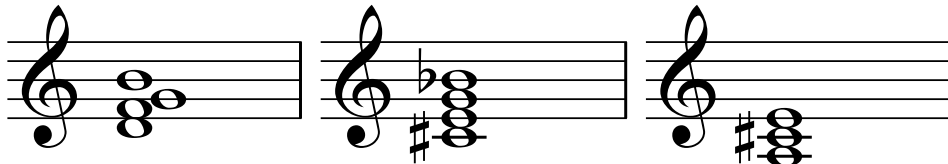
A^{b7}



Dm⁷

Gm/B^b

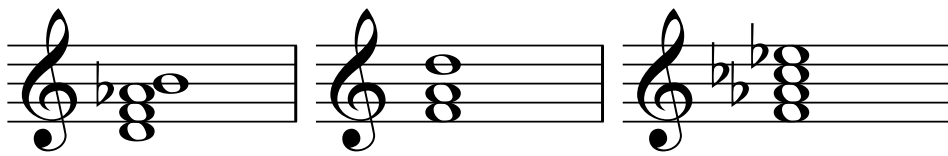
CMaj⁷/B



G⁷/D

C^{#o7}

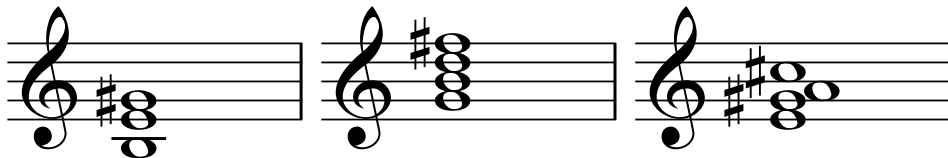
A



B^{b7}/D

Dm/F

F^{#7}



E/B

GMaj⁷

AMaj⁷/E

Analyze The Following Major Chord Progressions
Use Roman Numerals and Traditional Chord Names

I I₆ IV V₇ I
G G/B C D⁷ G

I vi ii V I
B^b Gm Cm F B^b

I V₆ I V₇ I
E B/D[#] E B⁷ E

Analyze The Following Minor Chord Progressions
Use Roman Numerals and Traditional Chord Names

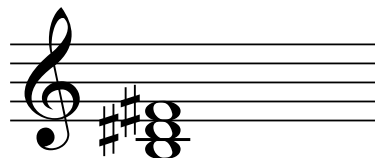
i bVI iv V₇ i
Bm G Em F#⁷ Bm

i iv i⁴₆ V i
Am Dm Am/E E Am

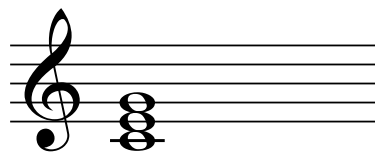
i V⁶₅ i V i
Gm D⁷/F# Gm D Gm

Spell The Following Chords

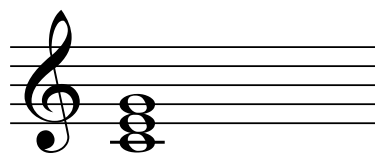
Spell a V/ii in D Major



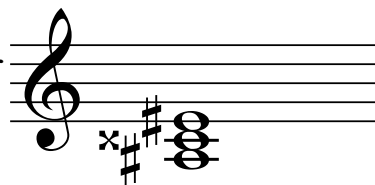
Spell a V/iv in C Minor



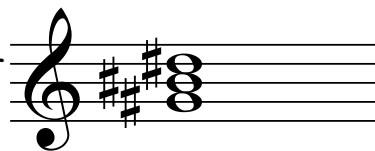
Spell a V/vi in A \flat Major



Spell a V/iii in B Major

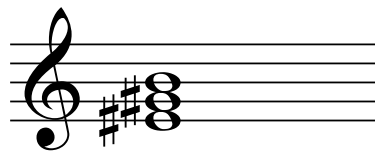


Spell a V/V in F# Minor

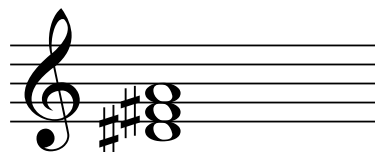


Spell The Following Chords

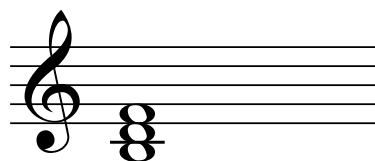
Spell a vii/vi in A Major



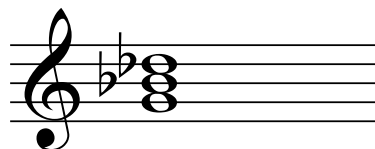
Spell a vii/iv in B Minor



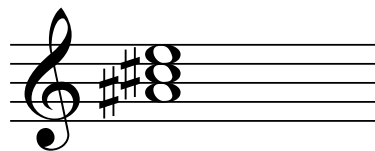
Spell a vii/ii in B \flat Major



Spell a vii/IV in E \flat Major

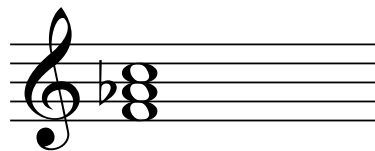


Spell a vii/III in G# Minor

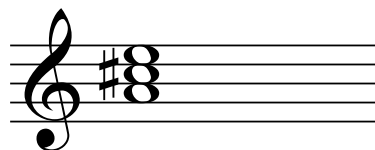


Spell The Following Borrowed Chords

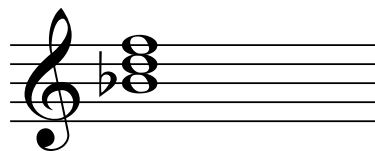
Spell a iv in C Major



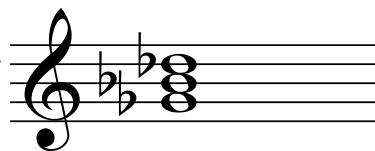
Spell a IV in E Minor



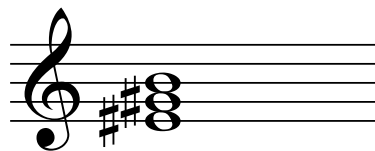
Spell a bVI in D Major



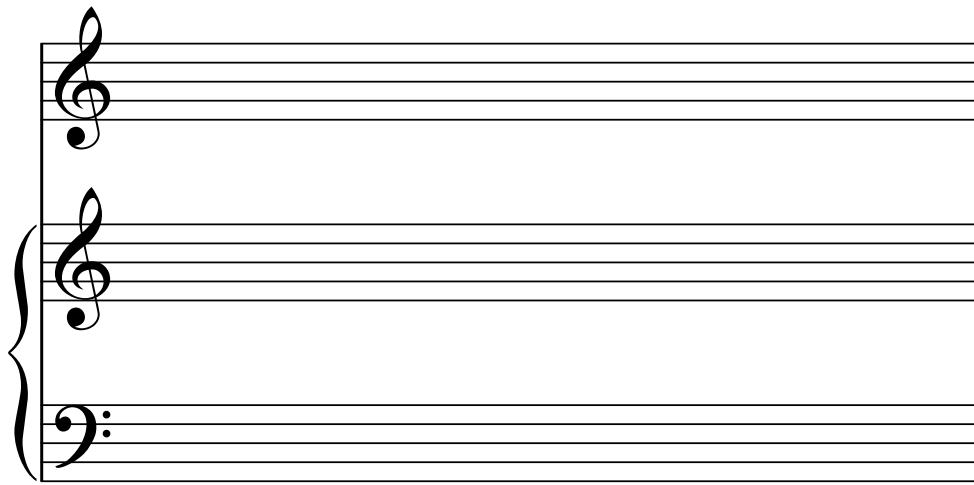
Spell a bVII in Ab Major



Spell a vii in F# Minor



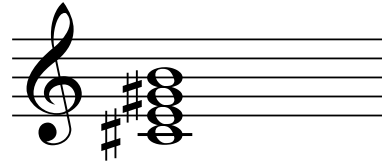
Using The Space Provided, Write a Melody,
Harmonize it Using Any Combination of:
Diatonic, Secondary and Borrowed Chords.



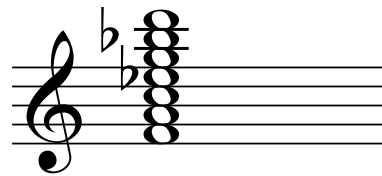
Now really, do you think I'm a mind reader?
Send your work to info@marcschonbrun.com
I'll be happy to check it!

Spell The Following Jazz Chords

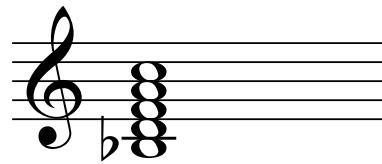
C#minor7



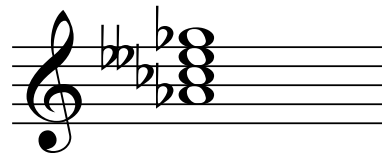
F13



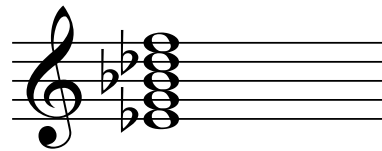
BbMajor9



Abminor7b5

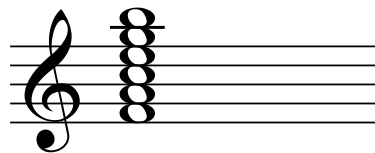


Eb9

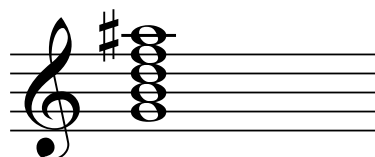


Spell The Following Altered Jazz Chords

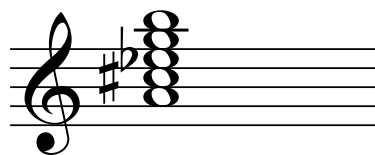
F Major7#11



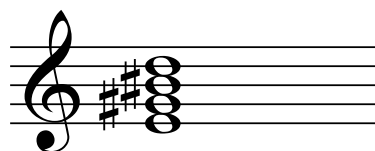
G7#9



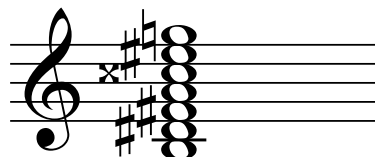
A9b5



E7#5

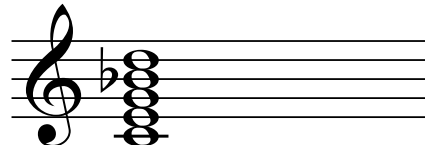


B7(#9#11b13)



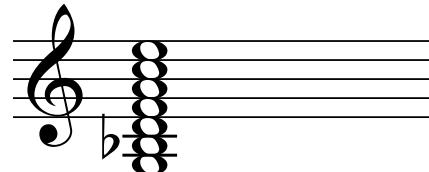
Name The Following Jazz Chords (Extended and Altered)

C⁹



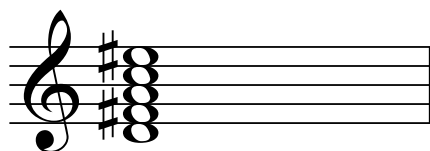
A treble clef staff with a key signature of one flat (Bb). The chord consists of the notes C, E, G, Bb, and C.

Gm¹³



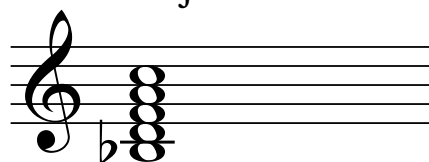
A treble clef staff with a key signature of one flat (Bb). The chord consists of the notes G, Bb, D, F, Ab, and G.

D7^{#9}



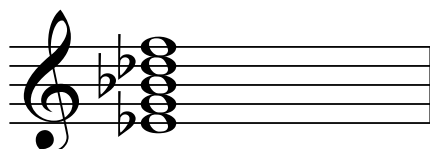
A treble clef staff with a key signature of two sharps (F# and C#). The chord consists of the notes D, F#, A, C#, and D.

B^bMaj⁹



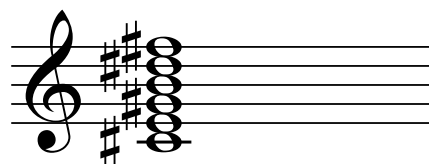
A treble clef staff with a key signature of one flat (Bb). The chord consists of the notes Bb, D, F, Ab, and Bb.

E^b9



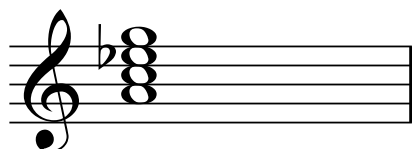
A treble clef staff with a key signature of two flats (Bb and Eb). The chord consists of the notes Eb, G, Bb, and Eb.

C[#]m¹¹



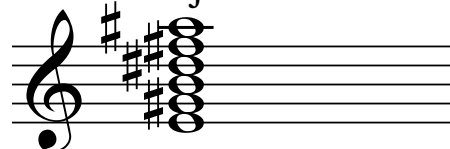
A treble clef staff with a key signature of three sharps (F#, C#, and G#). The chord consists of the notes C#, E, G#, B, and C#.

A^m7^{b5}



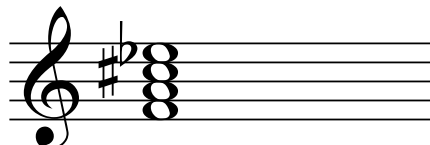
A treble clef staff with a key signature of one flat (Bb). The chord consists of the notes A, C, Eb, and A.

E^{Maj}7^{#11}



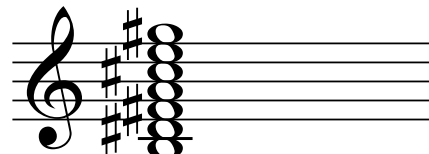
A treble clef staff with a key signature of one sharp (F#). The chord consists of the notes E, G#, B, D, and E.

F7^{#5}



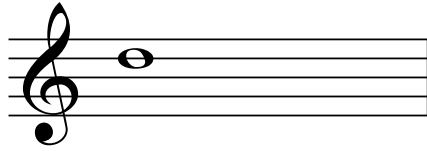
A treble clef staff with a key signature of one sharp (F#). The chord consists of the notes F, Ab, C, and F.

B¹³

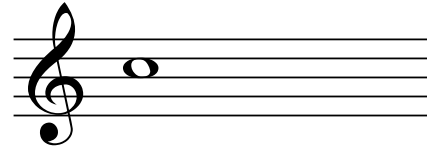


A treble clef staff with a key signature of three sharps (F#, C#, and G#). The chord consists of the notes B, D#, F#, Ab, and B.

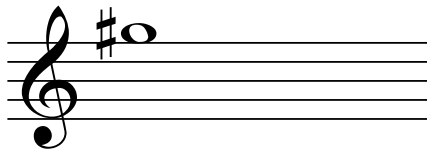
Transpose To Concert Pitch



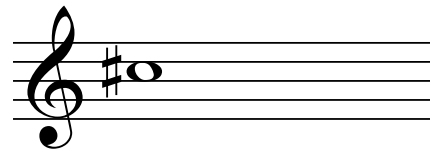
B \flat Trumpet →



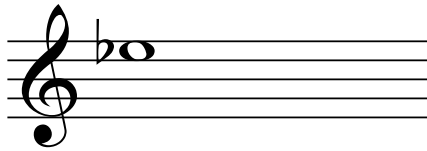
Concert Pitch



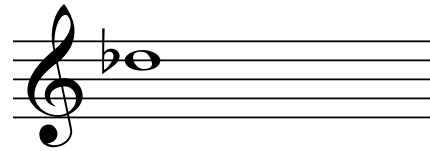
French Horn →



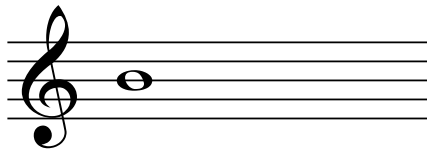
Concert Pitch



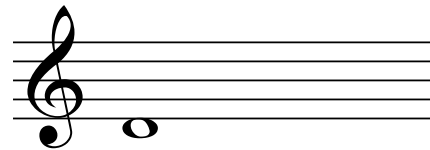
B \flat Clarinet →



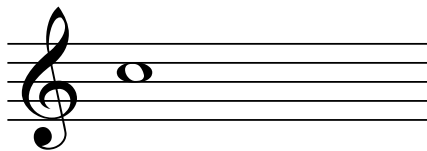
Concert Pitch



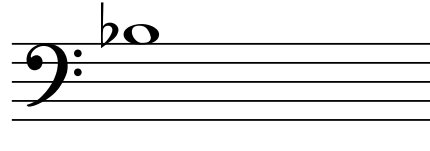
E \flat Alto Saxophone →



Concert Pitch

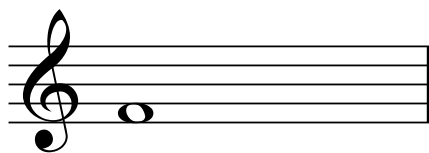


B \flat Tenor Saxophone →

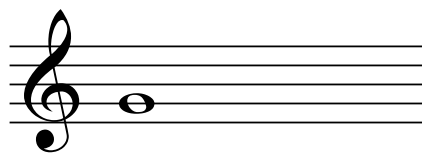


Concert Pitch

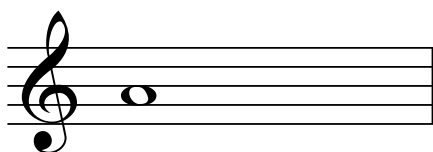
Transpose to Concert Pitch



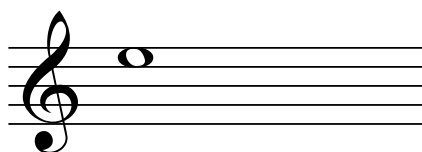
Concert Pitch →



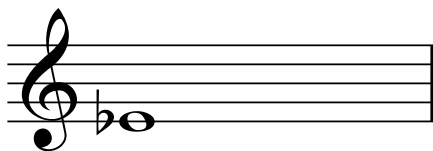
B \flat Trumpet



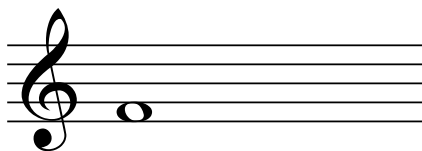
Concert Pitch →



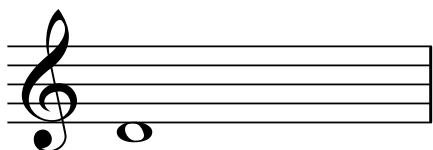
French Horn



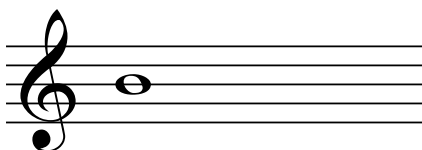
Concert Pitch →



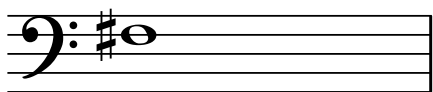
B \flat Clarinet



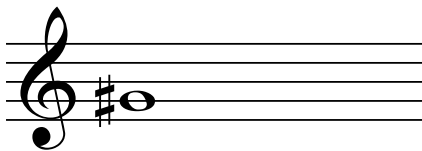
Concert Pitch →



E \flat Alto Saxophone

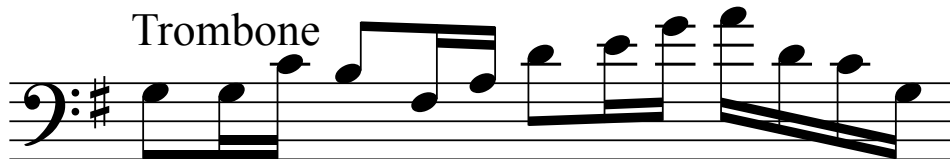
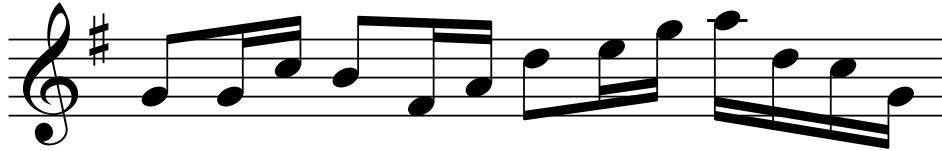


Concert Pitch →



B \flat Tenor Saxophone

Transpose This Melody So Each Instrument
Plays in Unison (In as close an octave as possible)



Note: Trombone and Sax had to be transposed
by octave due to range issues.