

The Everything Music Theory Book:

Etude Answers!

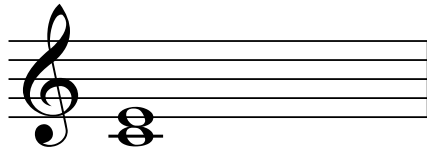
Due to a regretful glitch in the publishing process, the answers to the etudes were never published. I am deeply sorry about this, and have made these available for you now in PDF form.

If you have any questions, please contact me at:  
[info@marcschonbrun.com](mailto:info@marcschonbrun.com)

Thanks so much for your patience!

Marc Schonbrun

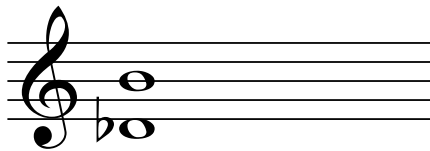
## Name The Following Intervals



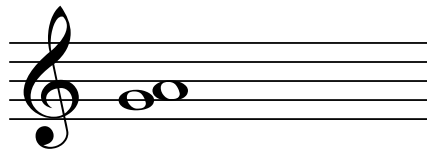
Major Third



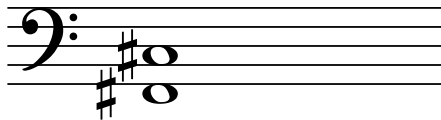
Minor Sixth



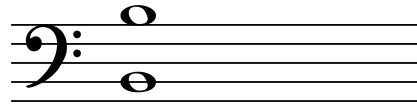
Augmented Sixth



Major Second



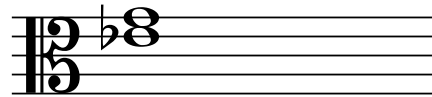
Perfect Fifth



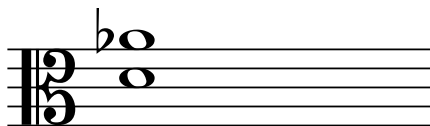
Perfect Octave



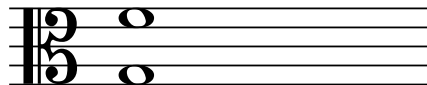
Minor Second



Major Third



TriTone

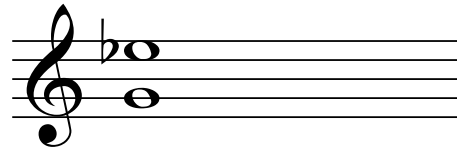


Minor Seventh

Write The Following Intervals  
(Ascending)



Major 3rd



Minor 6th



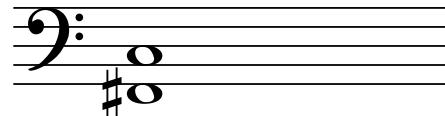
Perfect 4th



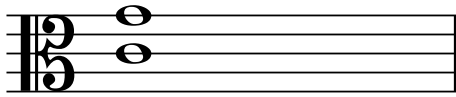
Major 7th



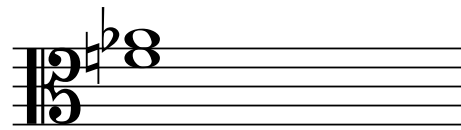
Minor 2nd



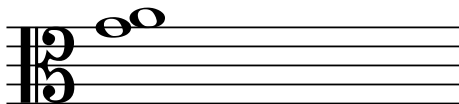
Diminished 5th



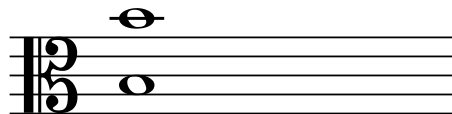
Perfect 5th



Minor 3rd

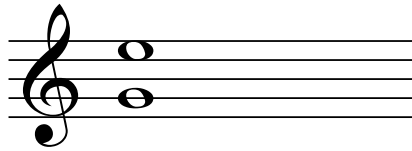


Major 2nd

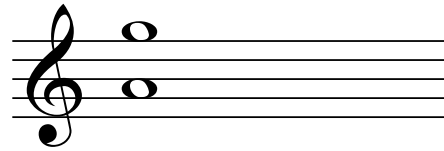


Octave

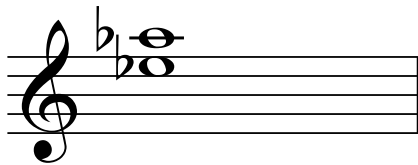
Write The Following Intervals  
(Descending)



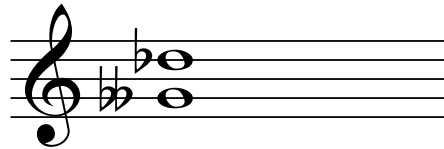
Major 6th



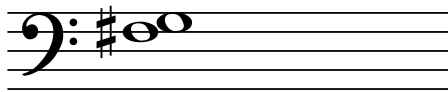
Minor 7th



Perfect 4th



Augmented 5th



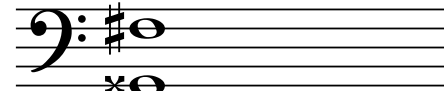
Minor 2nd



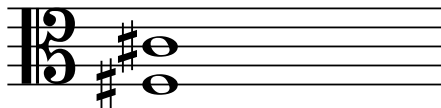
Octave



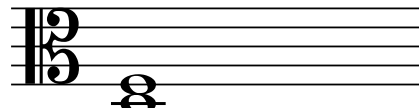
Unison



Diminished 7th

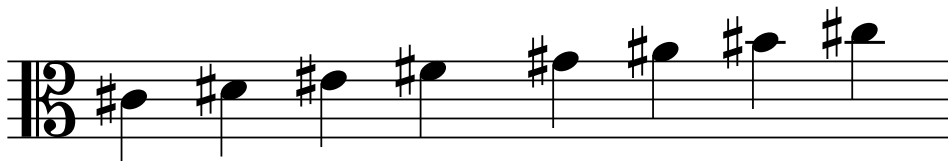
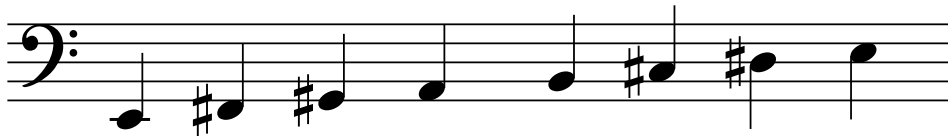
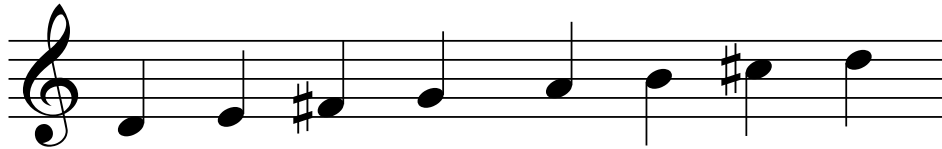


Perfect 5th

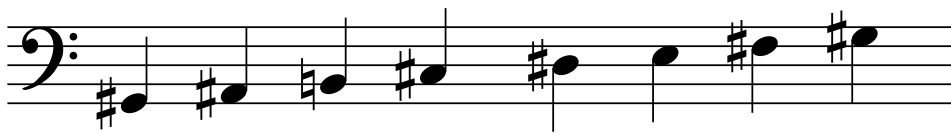
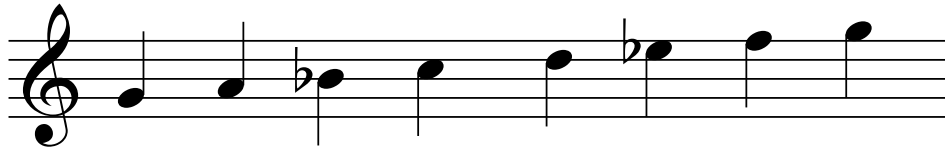


Minor 3rd

Write Major Scales From The Following Notes



Write Minor Scales From The Following Notes



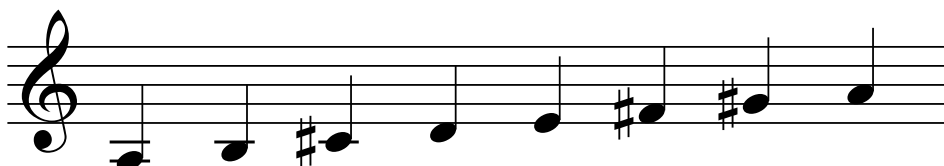
Name The Following Scales  
(Major or Minor)



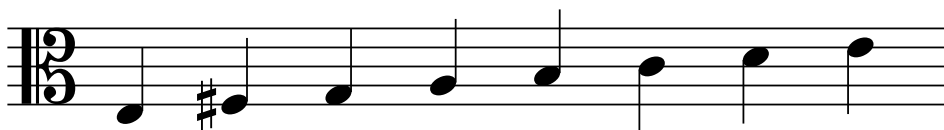
E $\flat$  Major



G Minor



A Major

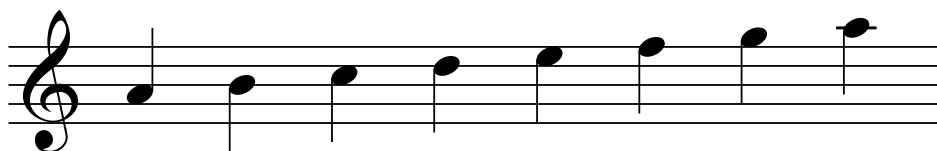


E Minor



B Major

Name The Following Scales  
(Major or Minor)



A Minor



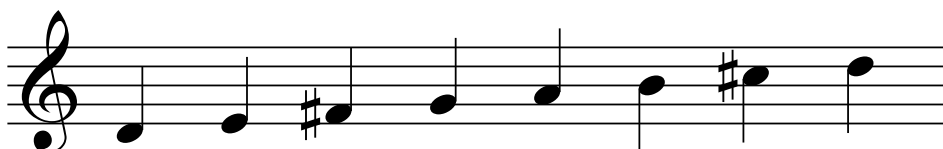
C# Minor



F Major



D Minor

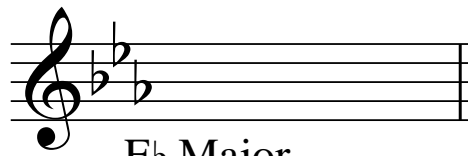


D Major

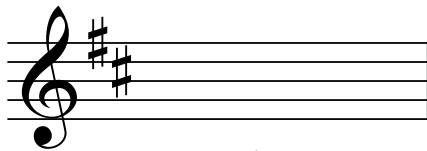
Name The Following Key Signatures  
(Major and Relative Minor)



A Major  
F# Minor



E $\flat$  Major  
C Minor



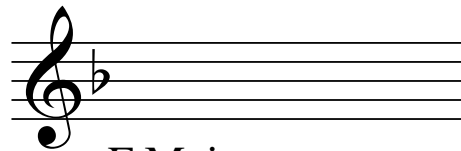
D Major  
B Minor



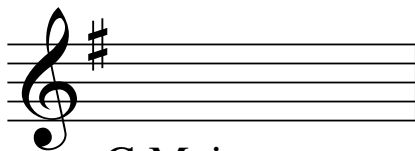
B Major  
G# Minor



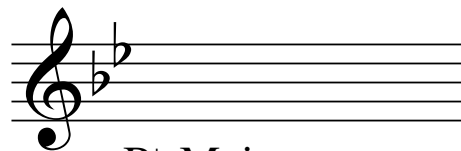
G $\flat$  Major  
E $\flat$  Minor



F Major  
D Minor



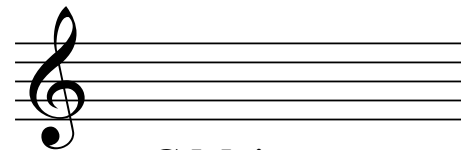
G Major  
E Minor



B $\flat$  Major  
G Minor

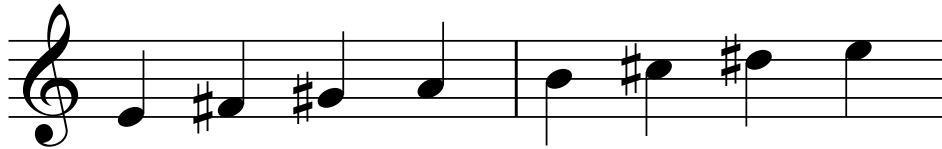


E Major  
C# Minor

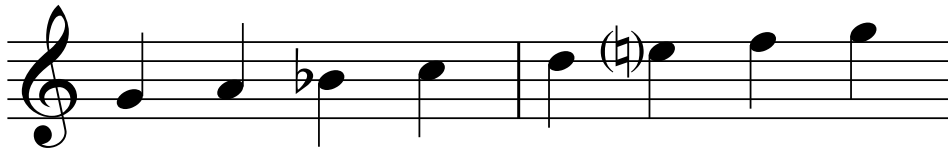


C Major  
A Minor

Write Modal Scales From The Following Notes



Ionian



Dorian



Phrygian



Lydian



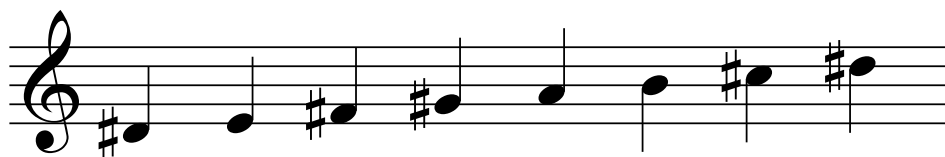
Mixolydian

Write Modal Scales From The Following Notes




Aeolian

A musical staff in treble clef showing the notes of the Aeolian mode: G4, A4, B4, C5, D5, E5, F5, G5. The notes are marked with accidentals: G#4, A#4, (B)5, C#5, D#5, (E)5, F#5, G#5.




Locrian

A musical staff in treble clef showing the notes of the Locrian mode: G4, A4, B4, C5, D5, E5, F5, G5. The notes are marked with accidentals: G#4, A4, B#4, C#5, D5, E5, F#5, G#5.



Mixolydian

A musical staff in bass clef showing the notes of the Mixolydian mode: G3, A3, B3, C4, D4, E4, F4, G4. The notes are marked with accidentals: G#3, A3, B#3, C4, D4, E4, (F)4, G4.



Dorian

A musical staff in bass clef showing the notes of the Dorian mode: G3, A3, B3, C4, D4, E4, F4, G4. The notes are marked with accidentals: G4, A4, Bb4, C4, D4, E4, (F)4, G4.



Lydian

A musical staff in bass clef showing the notes of the Lydian mode: G3, A3, B3, C4, D4, E4, F4, G4. The notes are marked with accidentals: G4, A4, B4, (C)4, D4, E4, F4, G4.

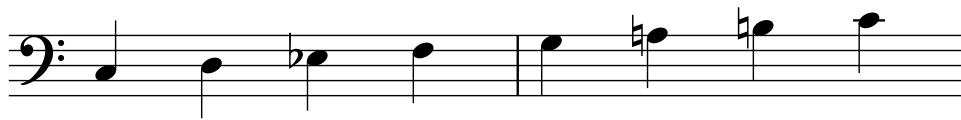
Write "Special" Scales From The Following Notes



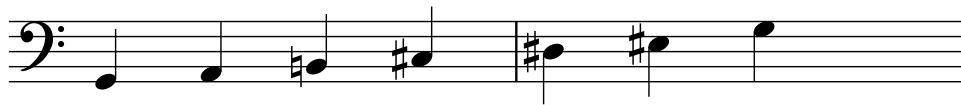
Harmonic Minor



Natural Minor



Melodic Minor



Whole Tone

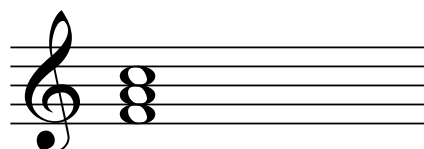
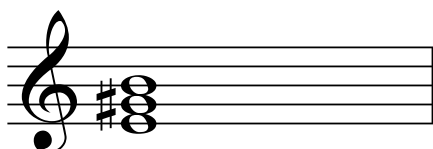
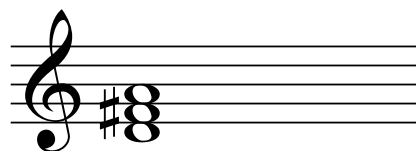
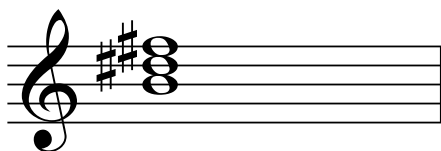
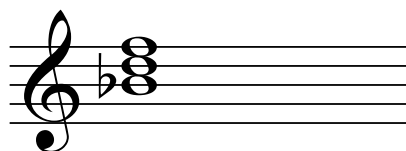
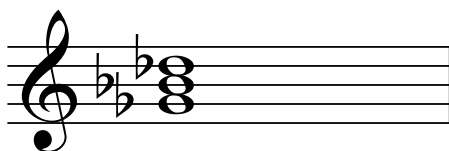
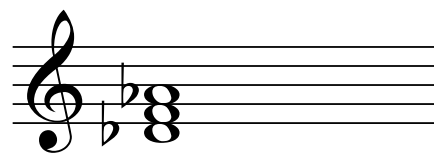
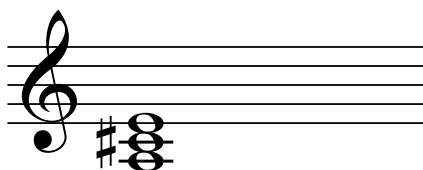
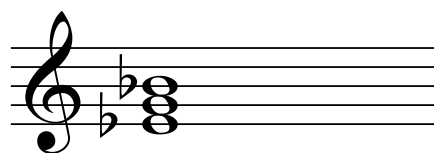
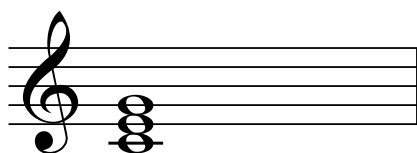


Diminished (Half Whole)

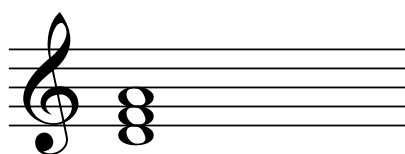
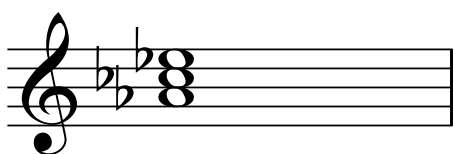
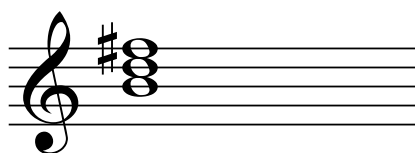
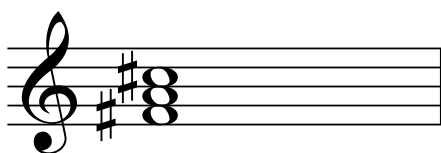
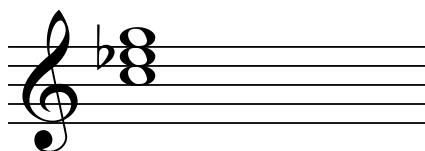
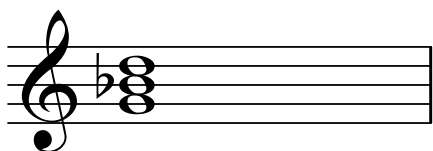
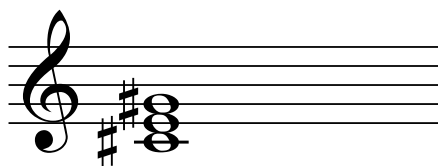
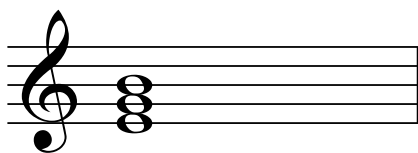
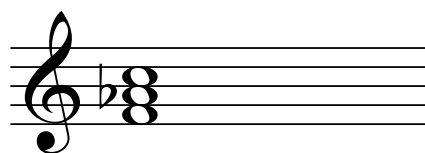
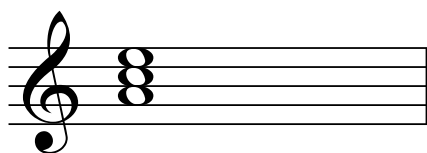


Diminished (Whole Half)

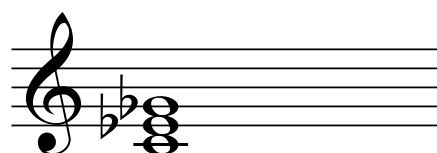
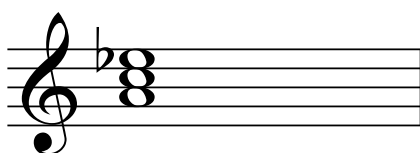
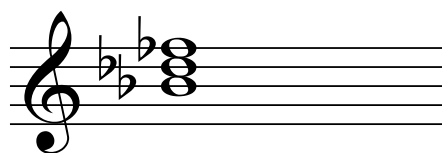
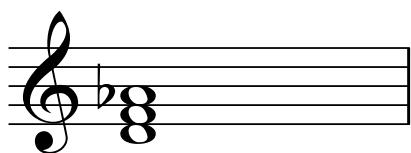
## Spell the Following Major Triads



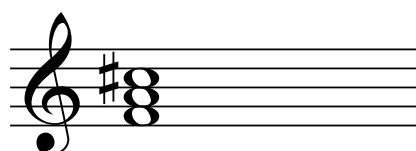
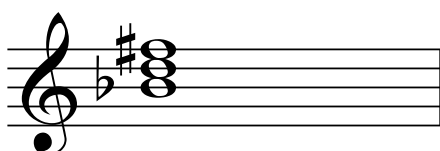
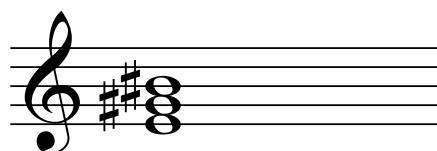
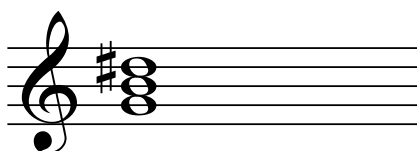
## Spell the Following Minor Triads



## Spell the Following Diminished Triads



## Spell the Following Augmented Triads



Spell Major Scales, Add Key Signatures,  
Add Diatonic Triads and Name The Triads

A musical staff in G major (one sharp) showing the diatonic triads for each note of the scale. The triads are: G (major), Am (minor), Bm (minor), C (major), D (major), Em (minor), F#° (diminished), and G (major).

G Am Bm C D Em F#° G

A musical staff in A major (two sharps) showing the diatonic triads for each note of the scale. The triads are: A (major), Bm (minor), C#m (minor), D (major), E (major), F#m (minor), G#° (diminished), and A (major).

A Bm C#m D E F#m G#° A

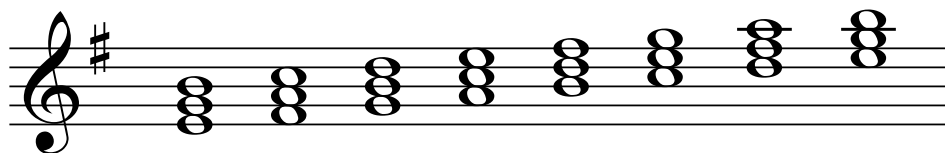
A musical staff in F major (one flat) showing the diatonic triads for each note of the scale. The triads are: F (major), Gm (minor), Am (minor), Bb (minor), C (major), Dm (minor), E° (diminished), and F (major).

F Gm Am B<sup>b</sup> C Dm E° F

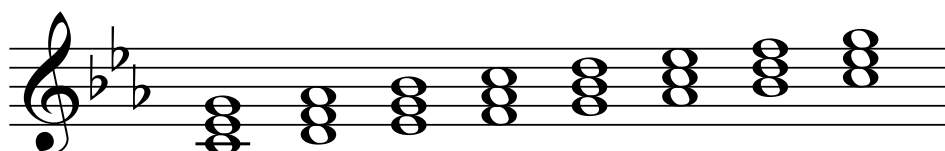
A musical staff in D flat major (two flats) showing the diatonic triads for each note of the scale. The triads are: Db (major), Ebm (minor), Fm (minor), Gb (minor), Ab (minor), Bbm (minor), C° (diminished), and Db (major).

D<sup>b</sup> E<sup>b</sup>m Fm G<sup>b</sup> A<sup>b</sup> B<sup>b</sup>m C° D<sup>b</sup>

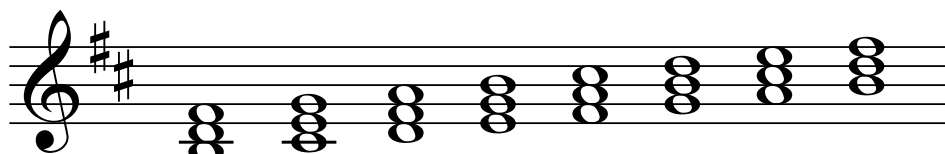
Spell Minor Scales, Add Key Signatures,  
Add Diatonic Triads and Name The Triads



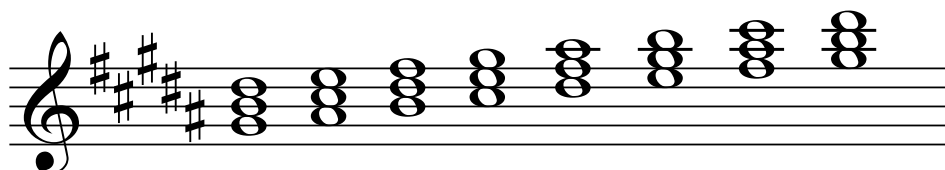
Em F#° G Am Bm C D Em



Cm D° Eb Fm Gm Ab Bb Cm

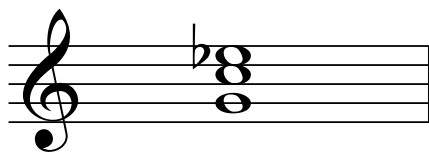


Bm C#° D Em F#m G A Bm

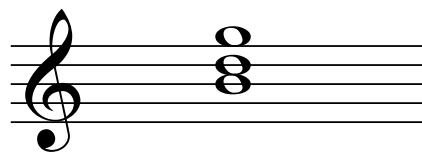


G#m A#° B C#m D#m E F# G#m

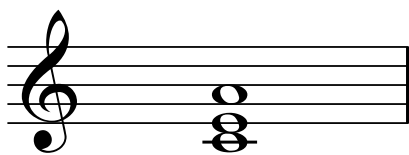
## Write The Following Inverted Triads



Cm/G  
i<sub>6</sub><sub>4</sub>



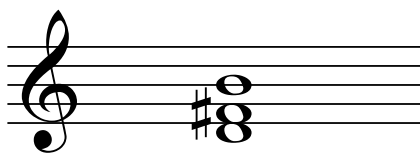
G/B  
I<sub>6</sub>



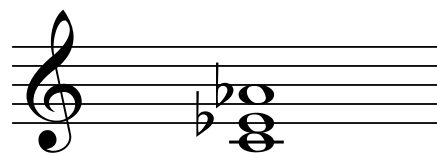
Am/C  
i<sub>6</sub>



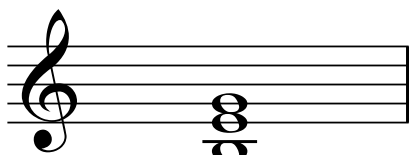
G#/D#  
I<sub>6</sub><sub>4</sub>



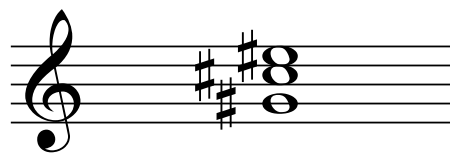
Bm/D  
i<sub>6</sub>



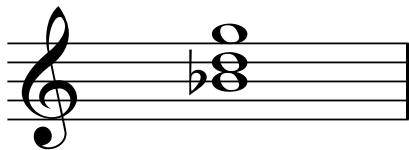
Ab/C  
I<sub>6</sub>



Em/B  
i<sub>6</sub><sub>4</sub>



C#/G#  
I<sub>6</sub><sub>4</sub>

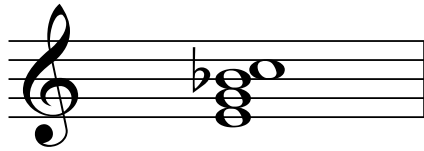


Gm/Bb  
i<sub>6</sub>

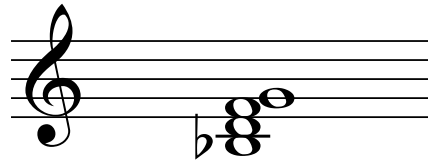


F#/A#  
I<sub>6</sub>

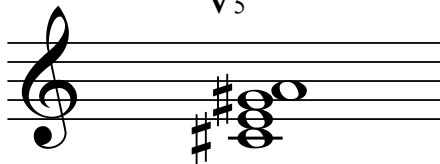
Write The Following Inverted Seventh Chords



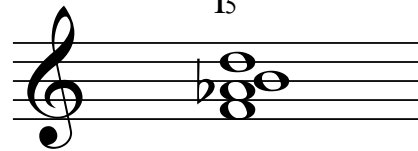
C7/E  
V<sub>5</sub><sup>6</sup>



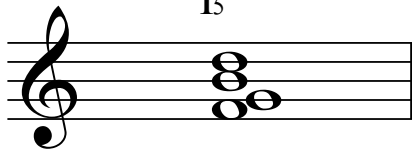
Gm7/B $\flat$   
i<sub>5</sub><sup>6</sup>



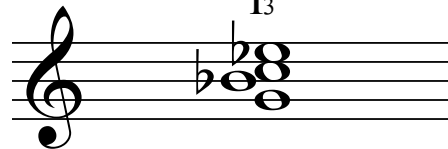
AMaj7/C $\sharp$   
I<sub>5</sub><sup>6</sup>



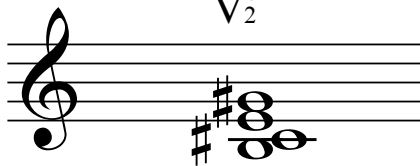
Bdim7/F  
I<sub>3</sub><sup>4</sup>



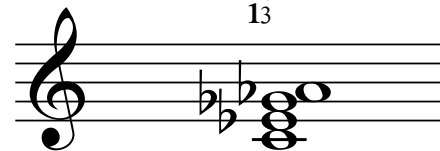
G7/F  
V<sub>2</sub><sup>4</sup>



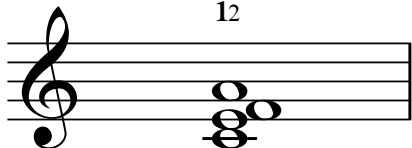
Cm7/G  
i<sub>3</sub><sup>4</sup>



C $\sharp$ min7/B  
i<sub>2</sub><sup>4</sup>



A $\flat$ 7/C  
V<sub>5</sub><sup>6</sup>

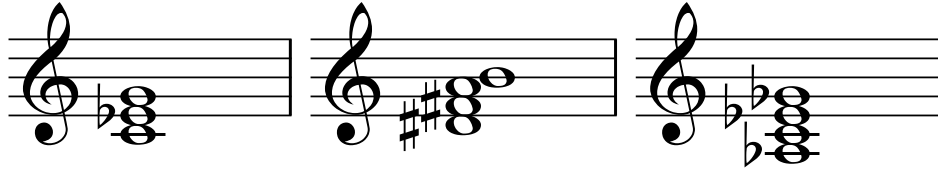


FMaj7/C  
I<sub>3</sub><sup>4</sup>



B $\flat$ min7/D $\flat$   
i<sub>5</sub><sup>6</sup>

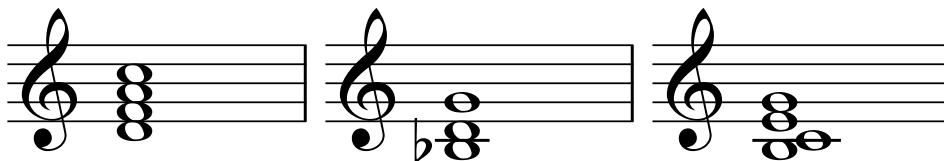
Name The Following Triads, 7th Chords and Inversions



Cm

B<sup>7</sup>/D<sup>#</sup>

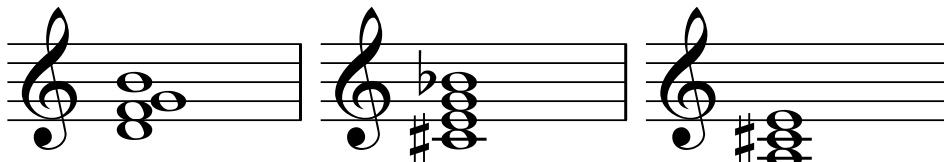
A<sup>b7</sup>



Dm<sup>7</sup>

Gm/B<sup>b</sup>

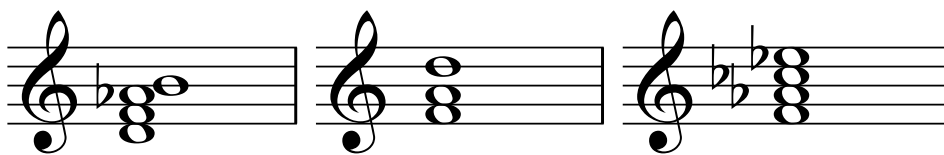
CMaj<sup>7</sup>/B



G<sup>7</sup>/D

C<sup>#o7</sup>

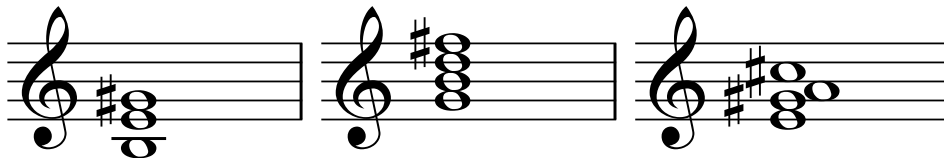
A



B<sup>b7</sup>/D

Dm/F

F<sup>#7</sup>



E/B

GMaj<sup>7</sup>

AMaj<sup>7</sup>/E

Analyze The Following Major Chord Progressions  
Use Roman Numerals and Traditional Chord Names

I            I<sub>6</sub>            IV            V<sub>7</sub>            I  
G            G/B            C            D<sup>7</sup>            G

I            vi            ii            V            I  
B<sup>b</sup>            Gm            Cm            F            B<sup>b</sup>

I            V<sub>6</sub>            I            V<sub>7</sub>            I  
E            B/D<sup>#</sup>            E            B<sup>7</sup>            E

Analyze The Following Minor Chord Progressions  
 Use Roman Numerals and Traditional Chord Names

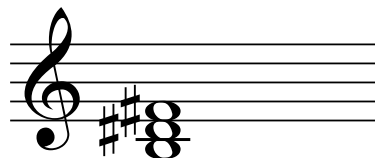
i      bVI      iv      V<sub>7</sub>      i  
 Bm      G      Em      F#<sup>7</sup>      Bm

i      iv      i<sub>4</sub><sup>6</sup>      V      i  
 Am      Dm      Am/E      E      Am

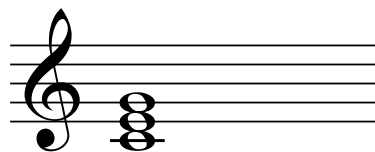
i      V<sub>5</sub><sup>6</sup>      i      V      i  
 Gm      D<sup>7</sup>/F#      Gm      D      Gm

## Spell The Following Chords

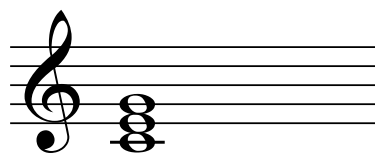
Spell a V/ii in D Major



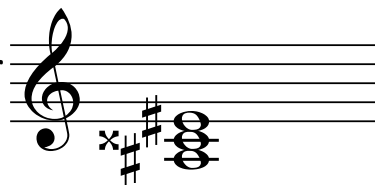
Spell a V/iv in C Minor



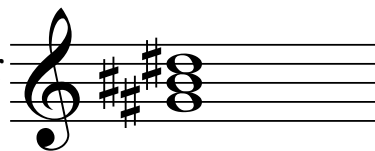
Spell a V/vi in A $\flat$  Major



Spell a V/iii in B Major

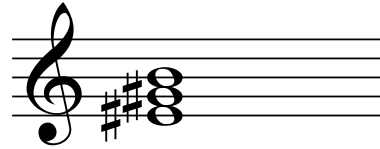


Spell a V/V in F# Minor

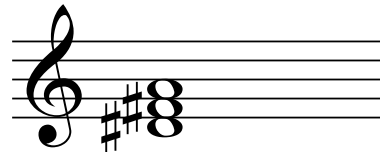


## Spell The Following Chords

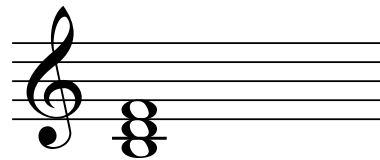
Spell a vii/vi in A Major



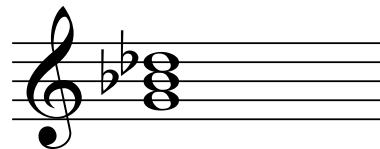
Spell a vii/iv in B Minor



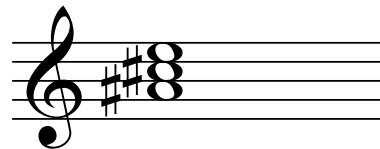
Spell a vii/ii in B $\flat$  Major



Spell a vii/IV in E $\flat$  Major

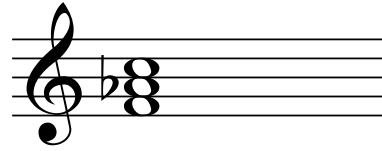


Spell a vii/III in G# Minor

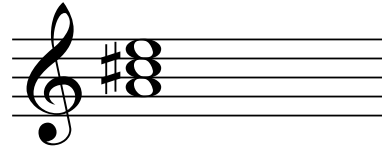


## Spell The Following Borrowed Chords

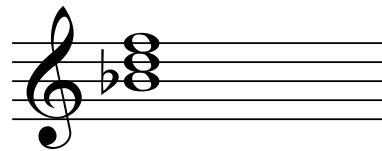
Spell a iv in C Major



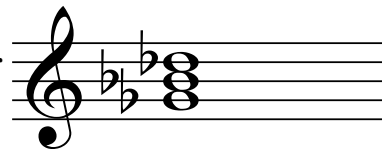
Spell a IV in E Minor



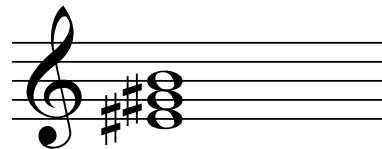
Spell a  $\flat$ VI in D Major



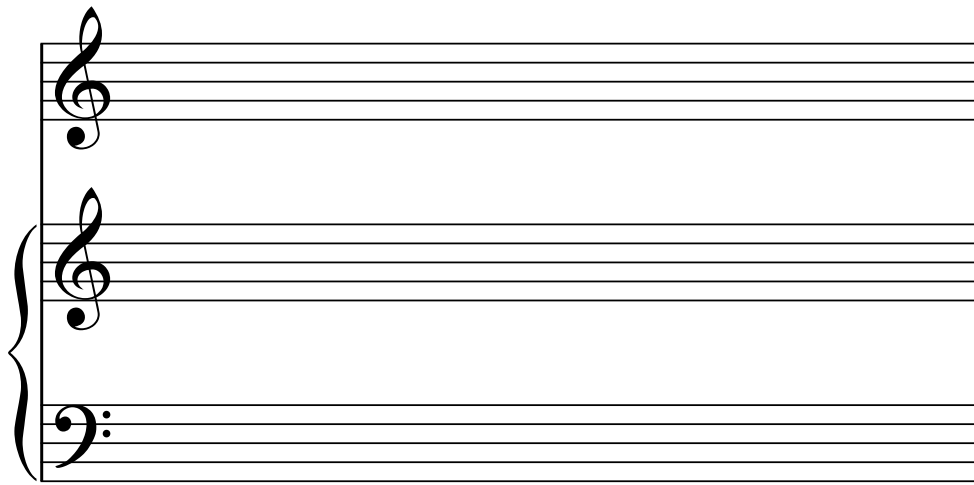
Spell a  $\flat$ VII in A $\flat$  Major



Spell a vii in F# Minor



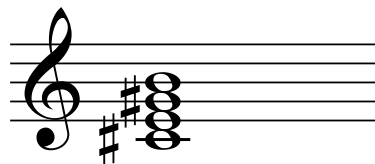
Using The Space Provided, Write a Melody,  
Harmonize it Using Any Combination of:  
Diatonic, Secondary and Borrowed Chords.



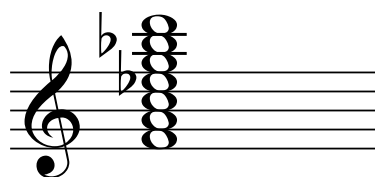
Now really, do you think I'm a mind reader?  
Send your work to [info@marcschonbrun.com](mailto:info@marcschonbrun.com)  
I'll be happy to check it!

## Spell The Following Jazz Chords

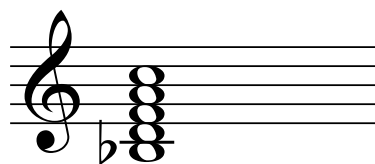
C#minor7



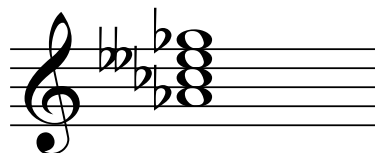
F13



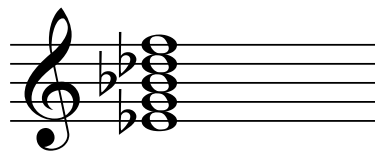
BbMajor9



Abminor7b5

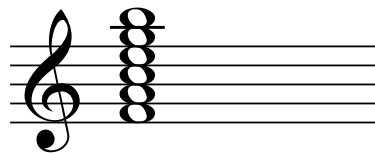


Eb9

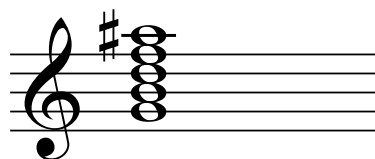


## Spell The Following Altered Jazz Chords

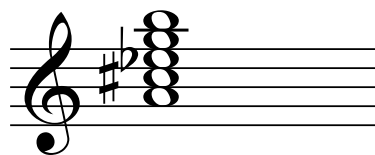
F Major7#11



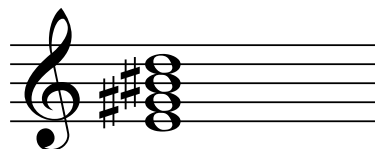
G7#9



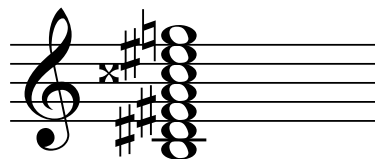
A9b5



E7#5

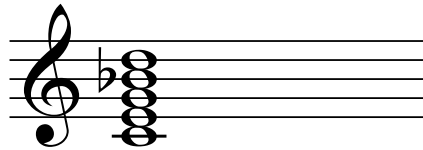


B7(#9#11b13)



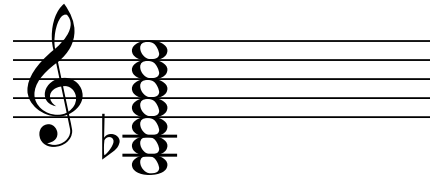
Name The Following Jazz Chords  
(Extended and Altered)

C<sup>9</sup>



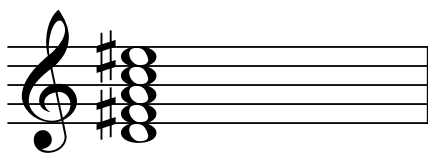
A treble clef staff with a key signature of one flat (Bb). The chord consists of the notes C, Eb, F, G, and Bb.

Gm<sup>13</sup>



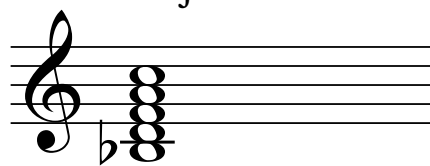
A treble clef staff with a key signature of one flat (Bb). The chord consists of the notes G, Bb, Db, Eb, F, Ab, and Bb.

D7<sup>#9</sup>



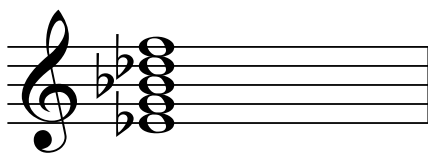
A treble clef staff with a key signature of two sharps (D major). The chord consists of the notes D, F#, G, A, and B.

B<sup>b</sup>Maj<sup>9</sup>



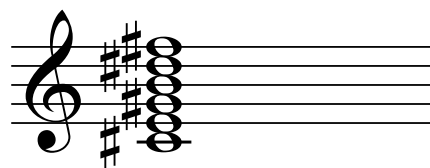
A treble clef staff with a key signature of one flat (Bb). The chord consists of the notes Bb, D, Eb, F, G, and Ab.

E<sup>b</sup>9



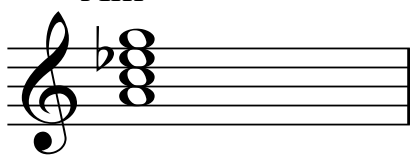
A treble clef staff with a key signature of two flats (Bb). The chord consists of the notes Eb, G, Ab, Bb, and D.

C<sup>#</sup>m<sup>11</sup>



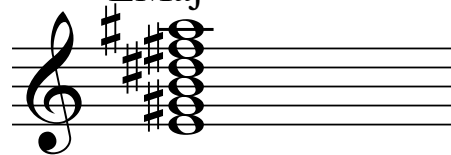
A treble clef staff with a key signature of three sharps (F# major). The chord consists of the notes C#, E, F#, G#, A, and B.

A<sup>m</sup>7<sup>b5</sup>



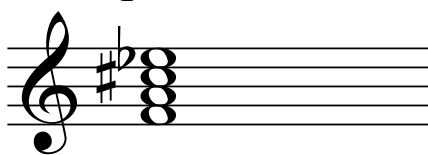
A treble clef staff with a key signature of one flat (Bb). The chord consists of the notes A, C, Eb, and F.

E<sup>Maj</sup>7<sup>#11</sup>



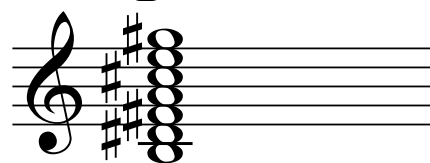
A treble clef staff with a key signature of one sharp (F# major). The chord consists of the notes E, G#, A, B, and C#.

F7<sup>#5</sup>



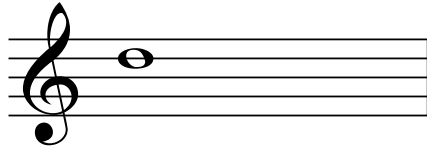
A treble clef staff with a key signature of one sharp (F# major). The chord consists of the notes F, A, C#, and Eb.

B<sup>13</sup>

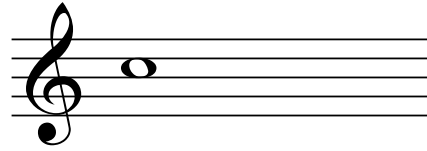


A treble clef staff with a key signature of three sharps (F# major). The chord consists of the notes B, D#, E, F#, G#, and A.

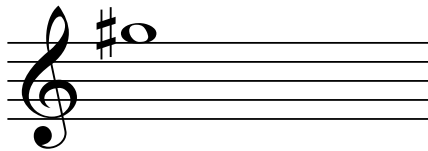
## Transpose To Concert Pitch



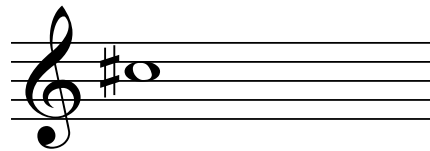
B $\flat$  Trumpet →



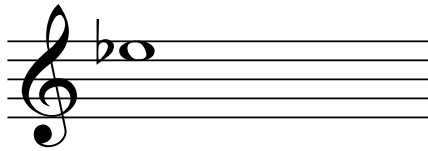
Concert Pitch



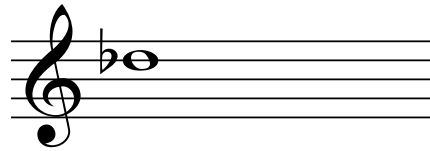
French Horn →



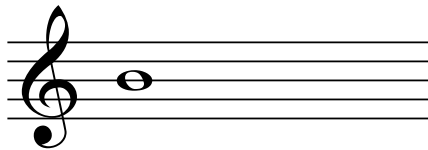
Concert Pitch



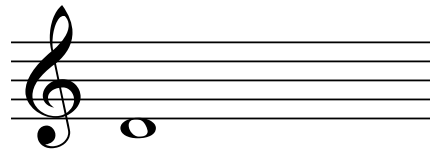
B $\flat$  Clarinet →



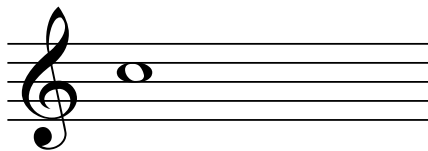
Concert Pitch



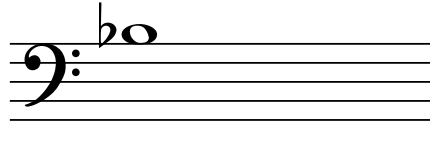
E $\flat$  Alto Saxophone →



Concert Pitch

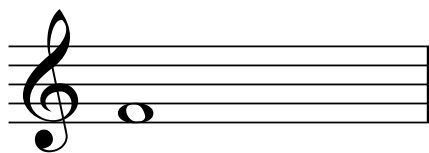


B $\flat$  Tenor Saxophone →

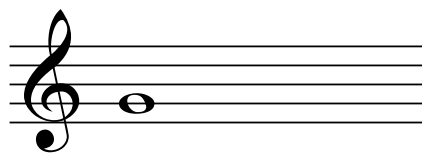


Concert Pitch

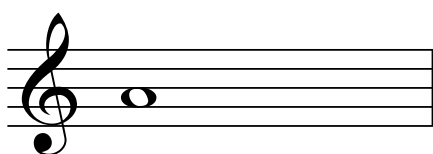
## Transpose to Concert Pitch



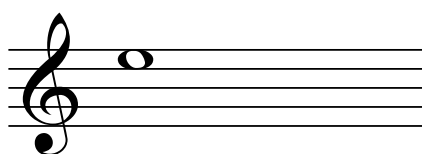
Concert Pitch →



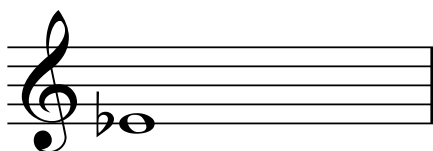
B $\flat$  Trumpet



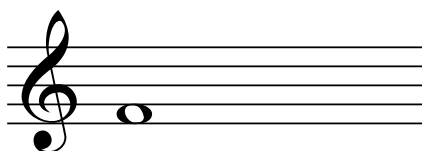
Concert Pitch →



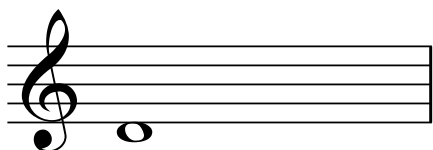
French Horn



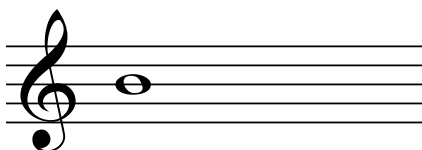
Concert Pitch →



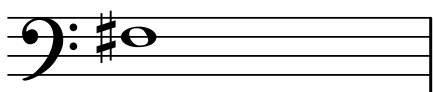
B $\flat$  Clarinet



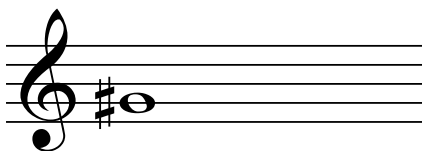
Concert Pitch →



E $\flat$  Alto Saxophone



Concert Pitch →



B $\flat$  Tenor Saxophone

Transpose This Melody So Each Instrument  
Plays in Unison (In as close an octave as possible)

